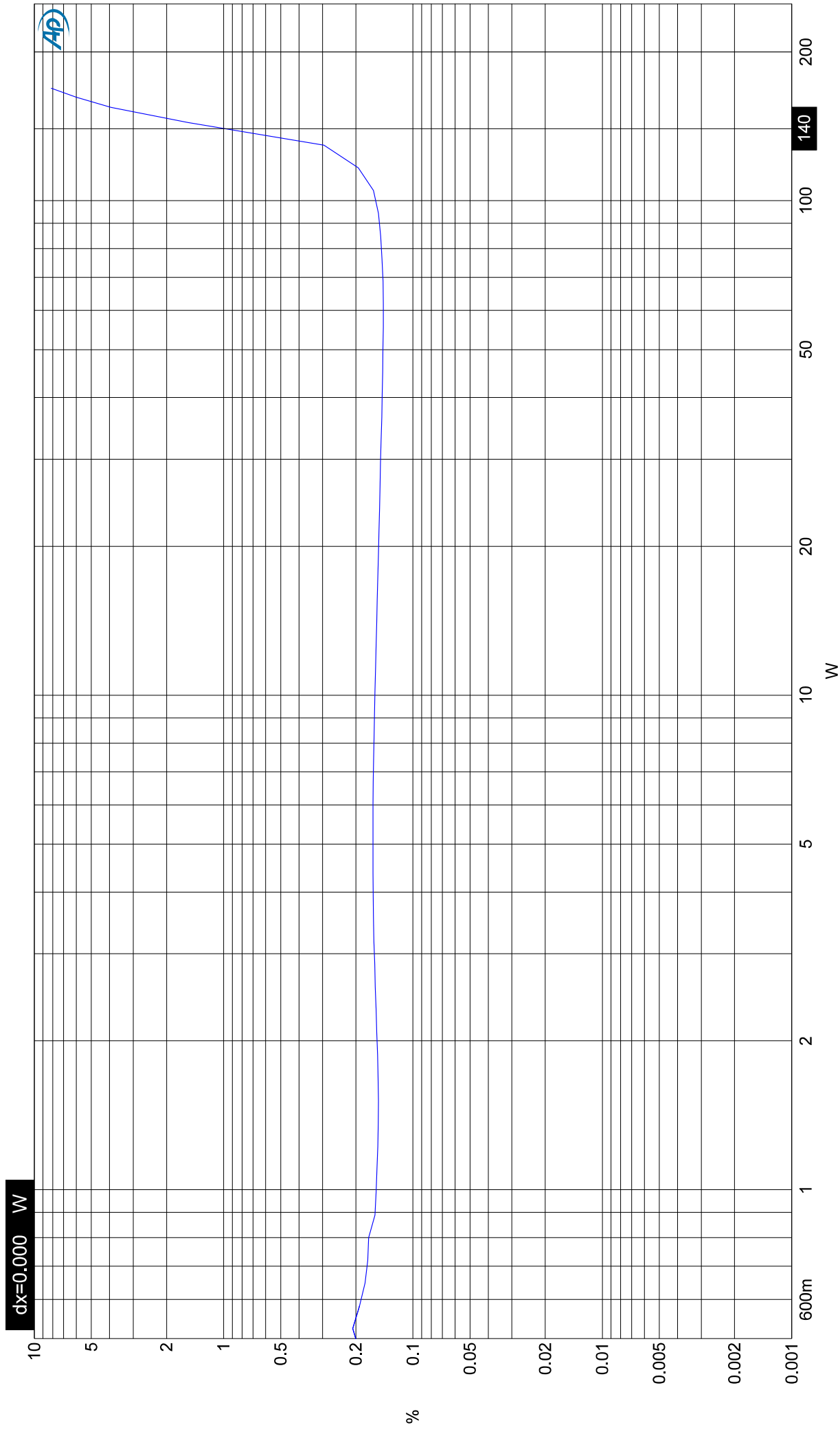




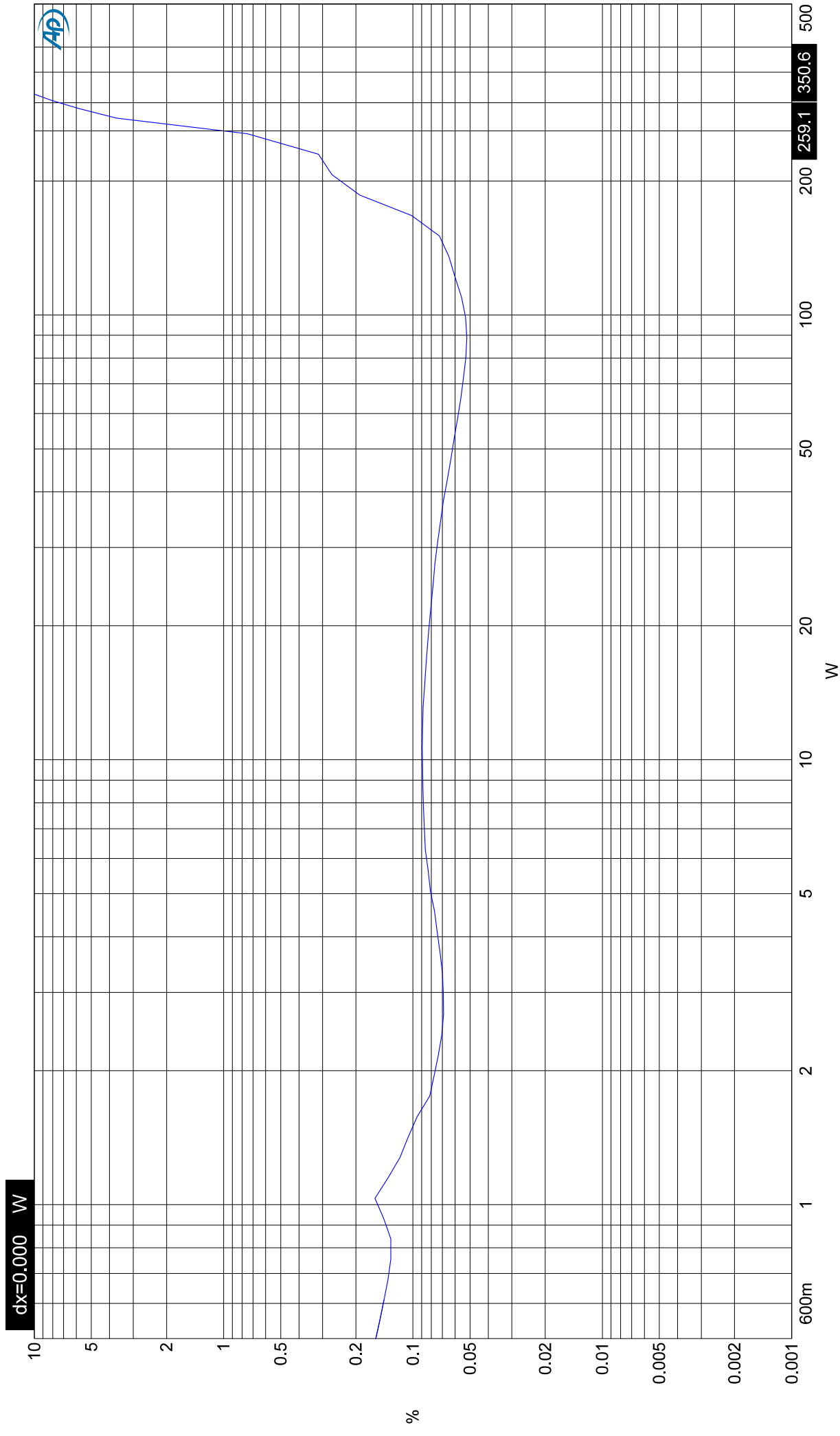
FANO-150 TEST REPORT

Performance Data	Nominal						Remarks
			1CH				
All tests 1kHz (except as noted)	Sample #:		3#				
NO BRIDGING!!	Date:		2019.4.10				
	Tech:						
Measurement	Target	Limits					
Standby Current (IOD)	<2mA		0.8				
Idle Current	< 1.5 A		0.73				
Turn On/Off Noise	None		PASS				
THD at Half Power: 50W at 4 Ohms	< 0.10%		0.053				
RCA Level Sensitivity (Min) 100W at 4 Ohms	3V	2.7 to 3.3	2.87				
(Max) 100W at 4 Ohms	150mV	135 to 165	143				
RCA Level Sensitivity (Min) 100W at 4 Ohms	5V	4.5 to 5.5	4.75				
(Max) 100W at 4 Ohms	250mV	225 to 275	236				
RCA Level Sensitivity (Min) 100W at 4 Ohms	10V	9 to 11	9.65				
(Max) 100W at 4 Ohms	500mV	450 to 550	472.8				
Speaker Polarity at 100Hz	In	< 40°	3.2				
1W Frequency Response	10Hz	20kHz	14.3	21.5K			
SNR-AU (Minimum Gain) – 100W at 4 Ohms	> 95dBAU		115.4				
SNR (CEA) 1 Watt	> 75dBAU		89.8				
Damping Factor at 50Hz/4 Ohm (below)	>100		180				
CMR Sweep (Unbal)	1kHz	20kHz					
	-40dB	-36dB	57.6	33.4			
4 Ohm Stereo Power at 1%, 14.4Vdc	>100W		140				
2 Ohm Stereo Power at 1%, 14.4Vdc	>200W		259				
Current Draw at 2 Ohm Stereo, 1%	<25A		20.4				
Efficiency at 2 Ohm Stereo, 1%	>75%		88.10%				

Time To Thermal (50Hz) – 1 st Shutdown 85°C	Time	Temp	1:42:29	78.9°C				
Recovery								
2 nd Shutdown								
Recovery								
3 rd Shutdown								
Recovery								
Thermal: Ambient Temp / Output	°C	W						
LED Operation (Thermal)	OK		OK					
Short Protection	No Failure		PASS					
LED Operation (Short)	OK		OK					
Over Voltage Protect (Up/Down)	16V	15.5 - 16.5	16					
LED Operation (OVP)	OK		OK					
Under Voltage Protect (Up/Down)	8V	7.5 - 8.5	8					
LED Operation (UVP)	OK		OK					
Under Voltage Protection (PRT LED on When Vs < 10.5V)	Yes		Yes					
Muting Circuit Delay (Time On) - (14.4Vdc)	3S	2.5 to 3.5S	32					
Muting Circuit Delay (Time Off) - (14.4Vdc)	<100uS		35					
Remote Turn-On Threshold	5V	4 to 6V	4.9					
- RCA Outputs Unmute?	N/A							
DC Offset Turn-On Threshold (LF Input)	3V	2 to 4V	2.9					
- Turn On Delay	3S	2.5 to 3.5S	3.2					
- Turn Off Delay	N/A							
- Remote Out Voltage (120 Ohm Load)	>11Vdc		13.94					
- RCA Outputs Unmute?	N/A							
Audio Turn-On Threshold (LF Input - Bal) 1KHz	>5mVrms		5					
- Turn Off Delay	60S	45 to 75	52					
TEST VOLTAGE..... 14.4±0.1V AUDIO ANALYZER: AP-System Two	STEG		MODEL: FANO-150		VER:			
					DWG NO: P/O:STEG150.1-E-03			
	PREPARED BY	DATE	CHECKED BY	DATE	APPROVED BY	DATE		
		2019.4.10						

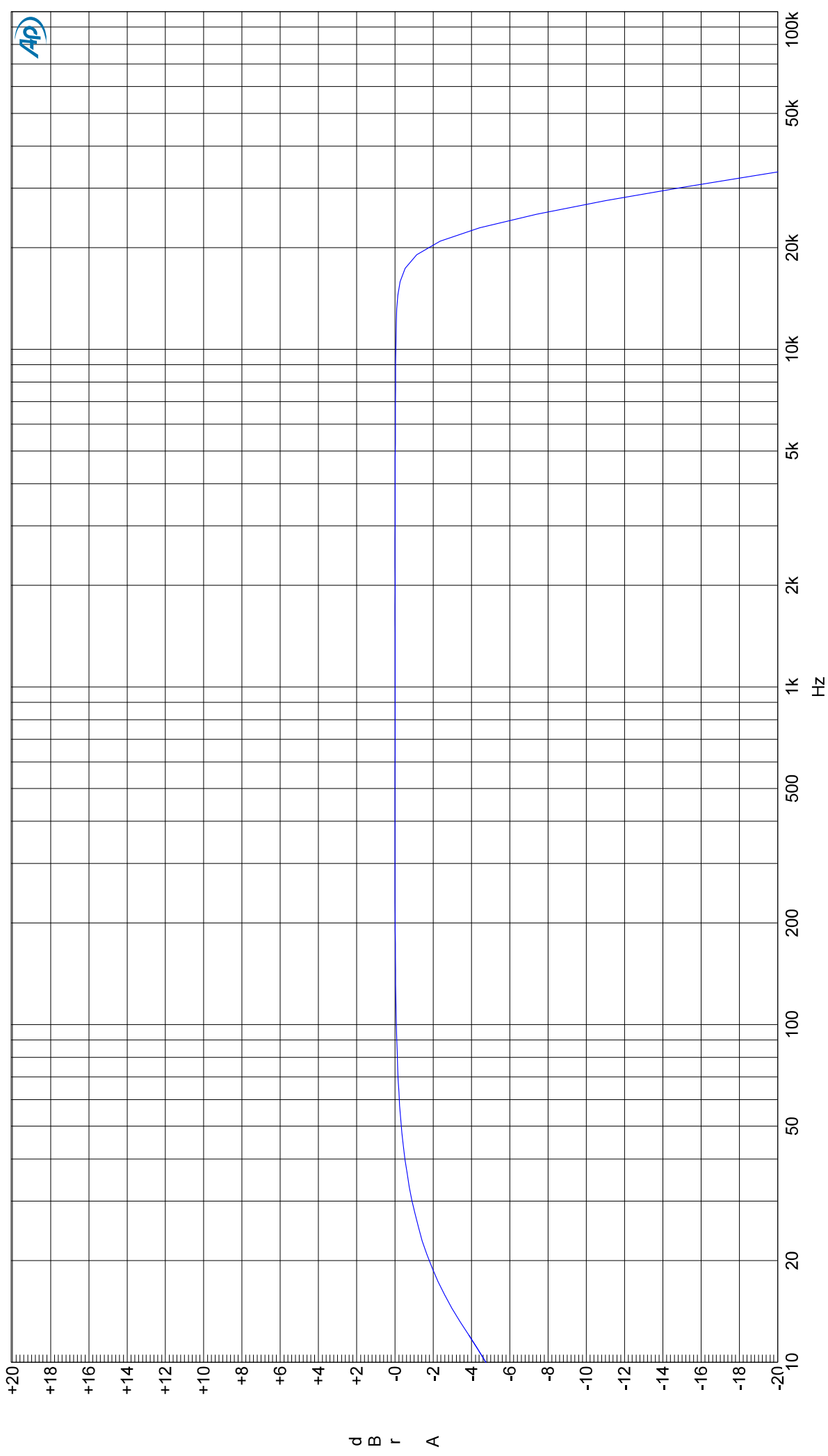


Sweep	Trace	Color	Line Style	Thick	Data	Axis	Comment	Cursor1	Cursor2
1	1	Blue	Solid	8	Anlr.THd+N Ratio	Left

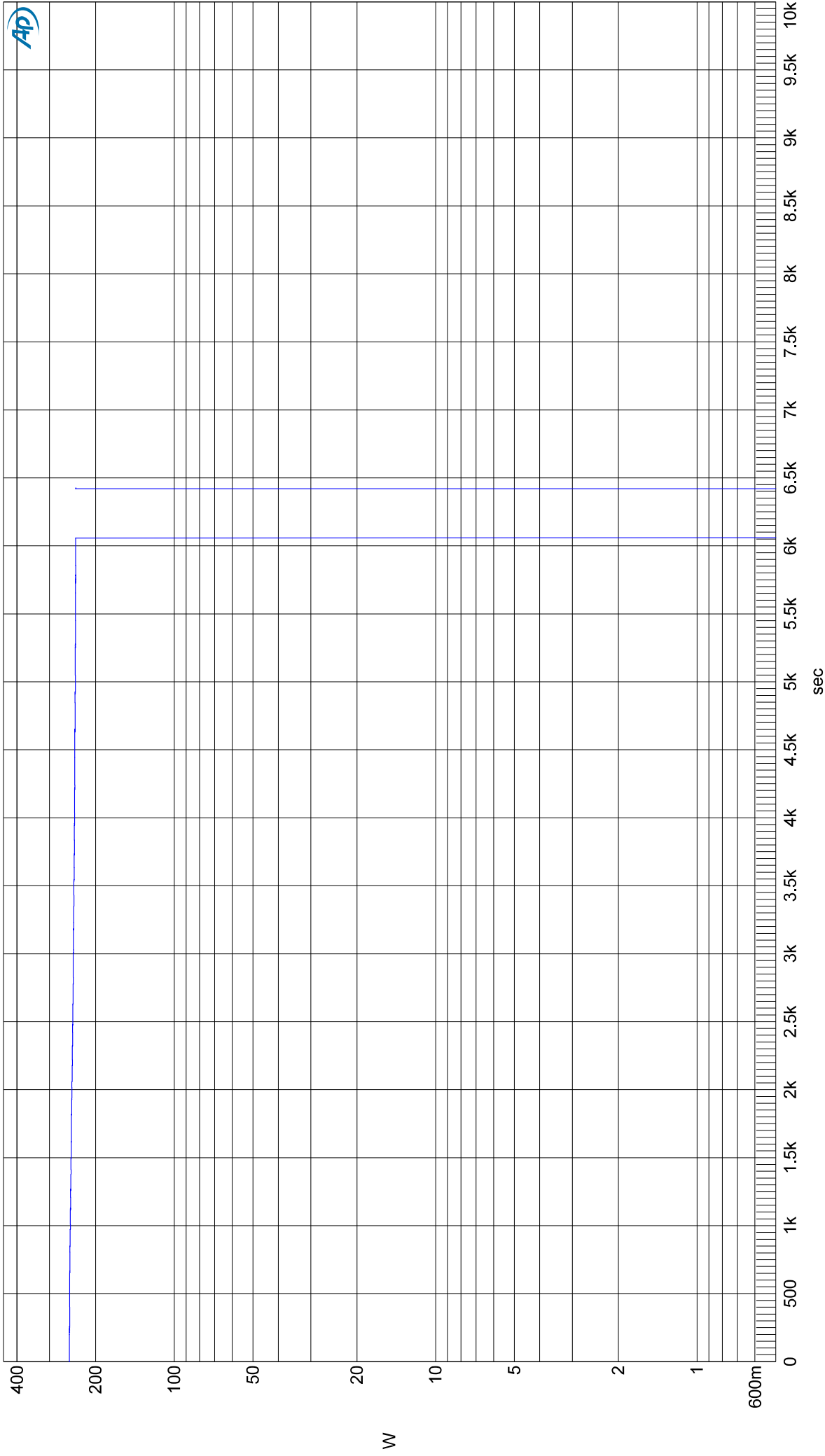


Sweep	Trace	Color	Line Style	Thick	Data	Axis	Comment	Cursor1	Cursor2
1	1	Blue	Solid	8	Anlr.THd+N Ratio	Left

FANO-150 3# 1KHz 20hm 1%THD.at2c



Sweep	Trace	Color	Line Style	Thick	Data	Axis	Comment
1	1	Blue	Solid	8	Anlr.Ampl	Left	

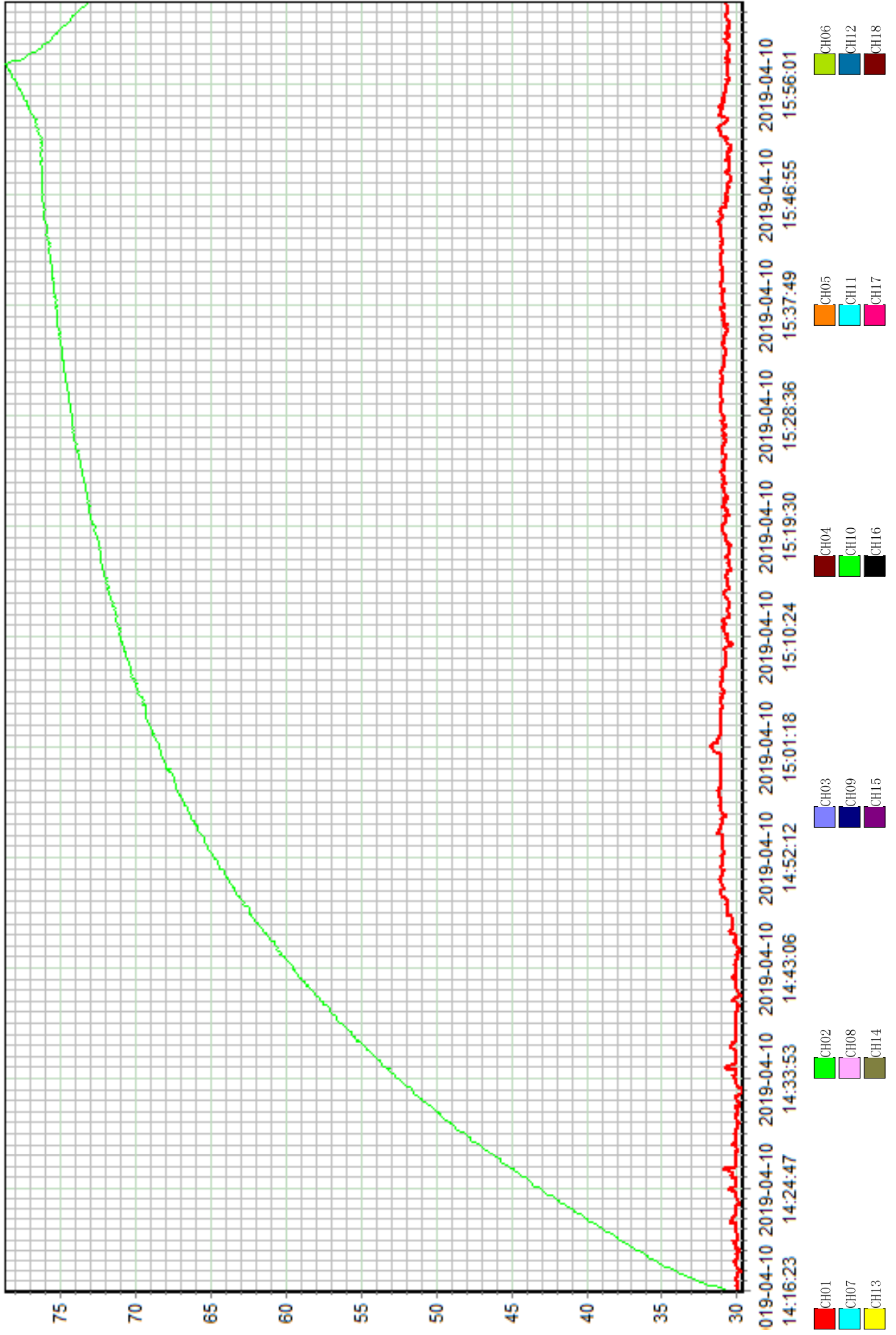


Sweep	Trace	Color	Line Style	Thick	Data	Axis	Comment
1	1	Blue	Solid	8	Anlr.Level A	Left	

2019-04-10 14:16:23

: 2019-04-10 16:02:54

2019-04-10 16:11:32



FANO-150 3# 100Hz 20hm 1%THD Time

	DATE	ROOM	RTH	
0	2019-04-10 14-15-06	30.1	30.6	On
6149	2019-04-10 15-57-35	30.7	78.7	Off
6474	2019-04-10 16-03-00	30.5	73.1	On